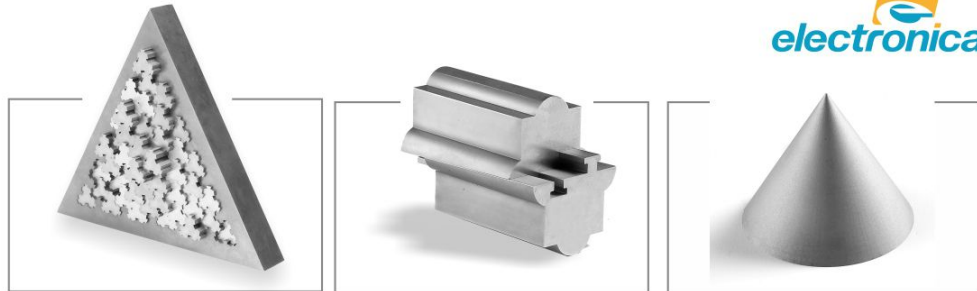


# eNova Series

High-Precision, High-Speed CNC Wirecut EDM

## Technical Specifications

Machine Tool	eNova 0S	eNova 1S	eNova 2S
Main axes traverse (X, Y)	320 x 220 mm	400 x 300 mm	600 x 400 mm
Aux. axes traverse (u, v)	100 x 100 mm	100 x 100 mm	120 x 120 mm
Work table size	600 x 400 mm	680 x 500 mm	900 x 580 mm
Max. taper angle	35° /50 mm	35° /50 mm	35° /50 mm
Max. work piece height	200 mm	300 mm	350 mm
Max. work piece weight	500 kg	500 kg	1000 kg
Resolution		0.0005 mm	
Max. wire spool capacity	8 kg (16-45 kg optional with de-coiler)		
Wire electrode diameter	0.25 mm (standard) 0.1, 0.15, 0.2, 0.3 (optional)		
Wire spool size	DIN 125, DIN 160, P-3-R, P-5-R		
Pulse Generator			
Max. machining current	25 A		
CNC controller	Turbo		
Controlled axes	X,Y,u,v,Z simultaneous/independent		
Least input increment	0.001 mm		
Least command input (X,Y, u, v,Z)	0.0005 mm		
Input power supply	3 phase AC 415V (±1%) 50 Hz (Alternate voltage/frequency ratings available on request)		
Connected load	13 kVA		
Average power consumption	11 kVA		
Data input/output	Wireless keyboard & Optical mouse, USB port, Ethernet port (LAN)		
Dielectric Unit			
Dielectric fluid	De-ionized water		
Dielectric tank capacity	700 Liters	850 Liters	1300 Liters
De-ion capacity	16 Liters		
Paper filter	Inside out type, 10 µ		
Dielectric cooling capacity	2100 kCal.		



In keeping with our constant endeavour to meet ever-changing market needs, we reserve the right to alter or change the specifications mentioned without prior notice.



www.electronicagroup.com

## Electronica India Limited

An ISO 9001:2008 Certified Organization

Regd. office : Poddar HMP House, 4, Fairle Place, Kolkata - 700001, India, CIN : U31908WB2013PLC193545  
Tel. : +91 33 22310268, Fax : +91 33 22 436966, Email : info@electronicagroup.com

Works : 608 / 609/1, Pune Pandharpur Road, Saswad, Taluka - Purandhar, Dist Pune - 412301  
Maharashtra (India), Email : works@electronicagroup.com

Central Marketing Office :

Pune : +91 9371068459 / +91 7798101001 / +91 9373569779, E : customercare@electronicagroup.com

High-Precision,  
High-Speed  
High Reliability  
CNC Wirecut EDM

eNova Series  
Submerged Type



### eNova 0S

- Table traverse : 320 x 220 mm
- Table size : 600 x 400 mm
- Max. work piece height : 200 mm

### eNova 1S

- Table traverse : 400 x 300
- Table size : 680 x 500
- Max. work piece height : 300

### eNova 2S

- Table traverse : 600 x 400 mm
- Table size : 900 x 580 mm
- Max. work piece height : 350 mm

### Advantages

- Compact footprint
- Slot Corner and external center finding features.
- Directly coupled AC Servo motors
- Wire spool capacity 8 kg
- Specially designed large surface area paper filter
- Wide cross-section of wire guide arm
- Centralized lubrication
- Stainless steel, non-corrosive hardened worktable
- Resin bowl - Large capacity of 16 Liters
- Auto-align
- Best surface finish : 0.39 µRa
- Max. Cutting Speed : 210 mm<sup>2</sup>/min

### Features

- High-precision 5 axes CNC
- e Nova CNC – Windows embedded CNC controller with TURBO motion control technology
- Capability of machining Poly-Crystalline Diamond
- Pulse Generator – Conforms to IEC 60204 standards
- FEA Verified Rugged Machine Tool
- Equienergy e Pulse Anti electrolysis ae Pulse ae<sup>2</sup> Pulse = ePulse + ae Pulse
- 16-step programmable flushing
- Windows-based ELCAM
- Ethernet for networking and remote monitoring
- Program transfer through USB and Ethernet
- Auto power recovery
- Auto Wire Threading (optional)
- Multistage water filtration



\*The photos are only indicative. For details always refer specifications.